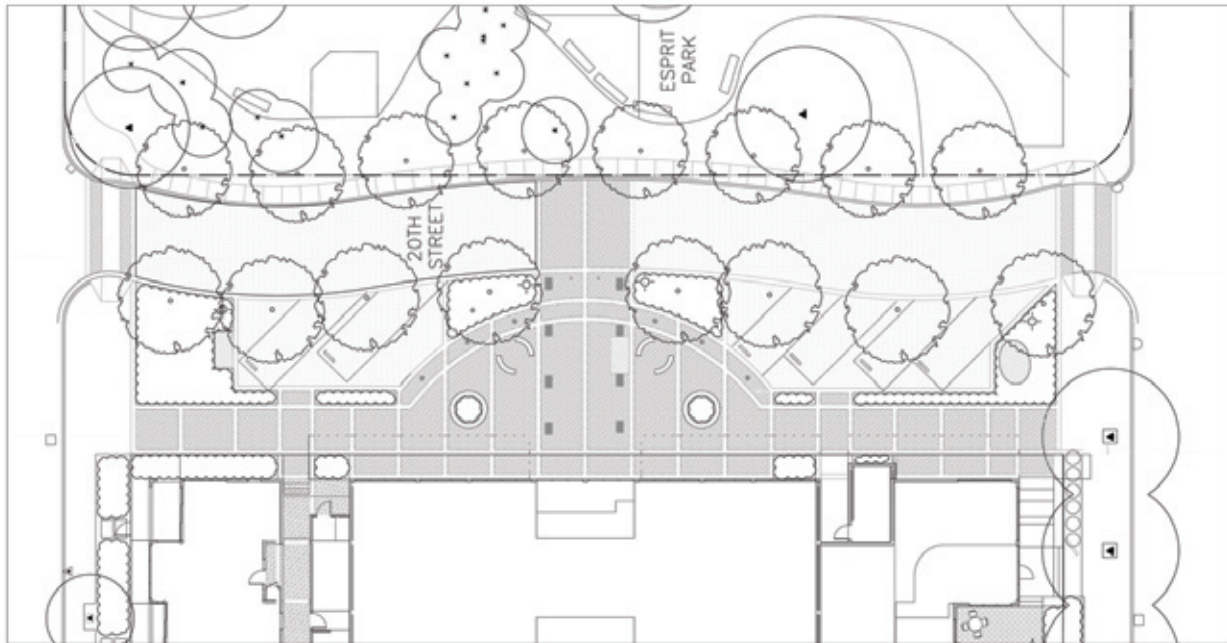


900 MINNESOTA STREET 20th Street Improvements

San Francisco, CA
Schematic Design Landscape Plan, 2005
Architect: Jon Worden Architects

Bruce Jett Associates proposed this "Living Street" solution to link new architecture with Esprit by redesigning 20th between Minnesota and Indiana Streets. Located under an overpass, the design program is to create flexible user-friendly pedestrian scale spaces as both building entry and public use.



20th Street
900 Minnesota, CA



The Cooperage
October 2005

GREEN STREETS

Bruce Jett Associates
155 FILBERT STREET, SUITE 208
OAKLAND, CALIFORNIA 94607

