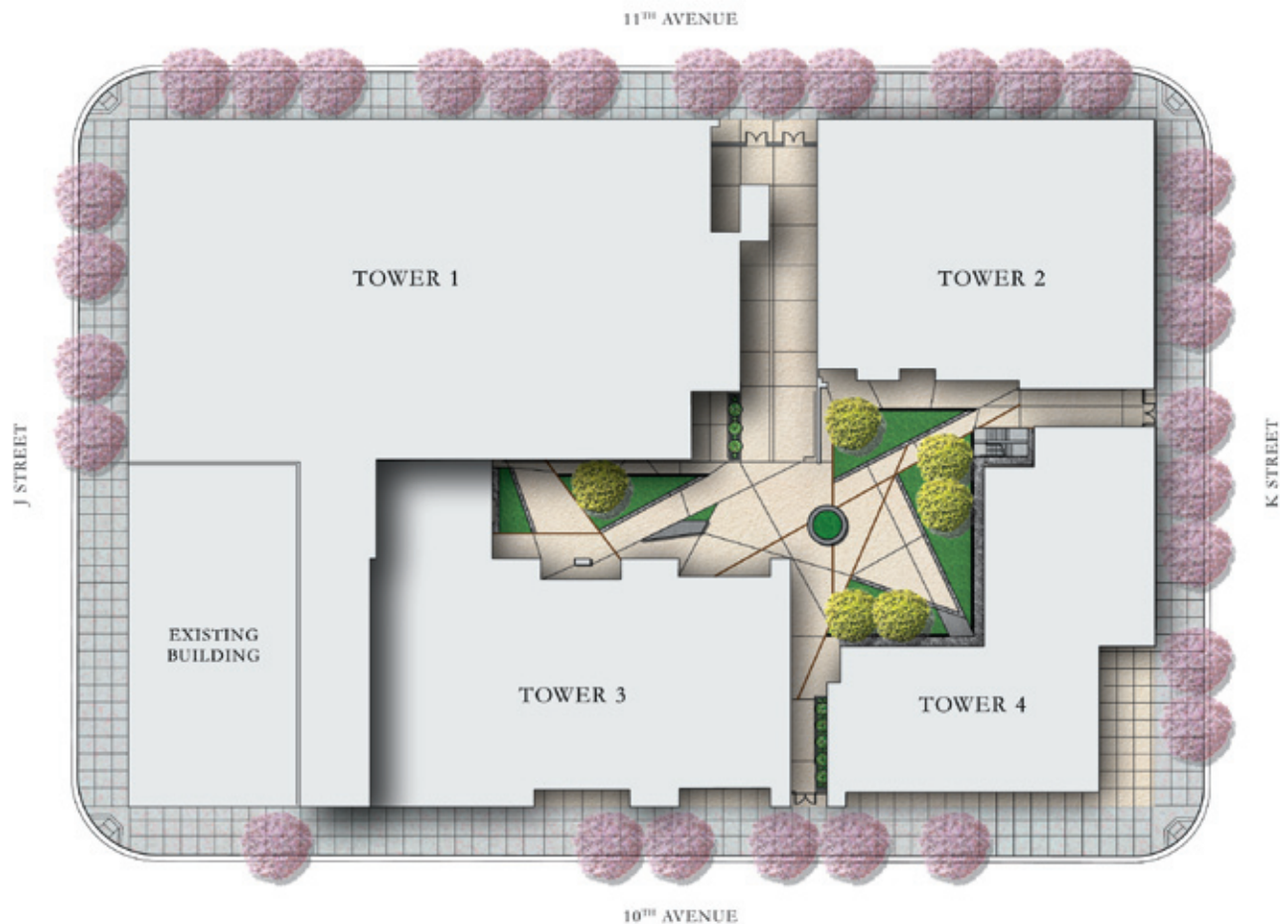


ICON TOWER 10TH AVENUE

San Diego, CA
Illustrative Landscape Plan, 2006
Architect: Tanner Hecht Architecture

Located in the heart of East Village, Icon is a multi-story mixed use development in downtown San Diego, consisting of a 323-unit, four-building complex, that proposes to give residents a more integrated urban lifestyle. Within walking distance are hundreds of shops and restaurants, the Gaslamp Quarter, PETCO ballpark, the waterfront, beaches and San Diego Bay. Scheduled for completion in late 2006, the four linked buildings include a 24-story tower overlooking the new PETCO ballpark and two on structure courtyards that offer residents a community open space to relax amongst water features, angular sloped meadows, ornamental trees and seasonal bulbs. Bruce Jett Associates worked closely with the architect to implement these idiosyncratic courtyards to meld with the contemporary architecture surrounding them and offer residents a sense of place within the surrounding urban context.



MIXED-USE RESIDENTIAL

Bruce Jett Associates
155 FILBERT STREET, SUITE 208
OAKLAND, CALIFORNIA 94607

